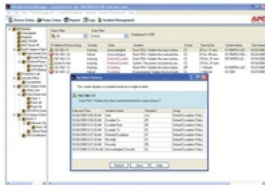


# APC AP9435 system management software (AP9435)

## InfraStruXure® Manager Incident Management Module



### Price details:

Price excl. VAT: 3,478.81 €

Eco fees: 0.00 €

VAT 21 %: 730.55 €

### Product details:

Product code: AP9435

EAN: 0731304233350

Manufacturer: APC

PDF generated on: 14 November, 2018



# 4,209.36 €

\* VAT included

Notification and event analysis for managing network-critical physical infrastructure (NCPI). Increase confidence of your NCPI availability by adding the Incident Management Module to your APC InfraStruXure® Manager. The added module enables quick and easy identification of the physical location and logical impact of a problem, and identifies the owner of the problem resolution. It helps establish and confirm a policy appropriate to your organization, ensuring the right people are notified for fast problem resolution, and prioritizes the urgency level of the incident accordingly. The Incident Management Module enables you to take proper corrective actions to return to the normal service level quickly, with minimal impact on business activity.

### AP9435 Features

- Customized escalation policies

Alerts are managed according to your escalation policies and received in multiple formats.

- Historical trending of alarms
- Incident history reports
- System level overview
- Customized notification schedule
- Prioritized urgency levels
- Workload management

### Availability

- Centralized management

Simplify management of the physical infrastructure using a centralized repository accessible from anywhere on the network through a powerful and easy-to-use console application.

- Remote administration

Minimize response times to critical network infrastructure situations with instant, on-demand device access through the primary IP network, console port, or KVM switches.

- Fault notification

Real-time event notification minimizes response times to critical physical infrastructure situations. Enables IT Administrators to reduce mean time to repair, improve efficiency, and maximize uptime.

- Power flow diagrams

Generate mimic diagrams showing system layout; see potential problems before they occur.

- Rack level management

Helps decision-making on where to locate new equipment without overloading branch circuits. Receive notifications of changes in rack power draw.

- Notification groups

Group devices to ensure the right people receive warnings to prevent and fix potential problems in a timely manner.

### Agility

- Multi-device support

Manage an extensive range of APC devices including: single-phase and three-phase UPSs, power distribution units, cooling and environmental devices as well as other InfraStruXure® Manager Appliances.

- Scalability

The extensible platform can be scaled to meet changing business needs and requirements on demand. The management of additional devices is allowed as needed, while powerful facility and service management applications help to expand the product's management capabilities.

- Auto-discovery

Speed deployment by specifying remote network segments or an IP address range to discover APC devices.

- Concurrent Deployment and Updates

Decrease set-up time and complexity by simultaneously configuring settings or upgrading firmware for multiple devices.

- Data logging

Identify problematic trends before they escalate or export the data log for analysis.

- Battery status reports

Help prevent problems and pinpoint additional runtime requirements.

- Private IP Network

Manage multiple devices from a single IP address.

#### Total Cost of Ownership

- Browser Accessible

View the user interface with a browser. Gives quick access from anywhere on the network without the need to install software.

- Global Threshold Alarms

Set standards for select UPSs, PDUs and environmental settings to stay informed of system performance.

- Recommended Actions

Providing descriptions of problems together with recommended actions reduces the need of training, eases deployment and speeds troubleshooting.

- Set-Up Wizards

Easy to use wizards speed deployment by decreasing set up time.

- Floor layout view

Integration with InfraStruXure® Designer enables import of the customized, aerial representation of a room layout for ease of navigation and improved monitoring, which minimizes errors and cost.

- Building Management System Integration

Send alarms and data points allowing you to manage critical building infrastructure from a single system.

- Enterprise management system compatible

Make device information available to your preferred enterprise management system by forwarding SNMP traps (events)

#### Protection

- Password Security

User-selectable password protection prevents unauthorized access.

- Read-only Access

Share access without risking unauthorized configuration changes.

- Encryption

Helps ensure effective access control and integrity for SSL browser and SSH sessions.

- Radius support

Use an existing radius server to securely authenticate, authorize, and account for your APC device.

---

#### Main specifications:

##### System requirements

Platform:	PC
Mac compatibility:	N