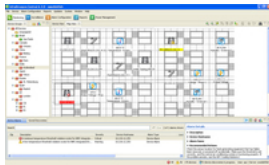




APC StruxureWare Central (AP95500)

StruxureWare Central, 500 Node License Only



Price details:

Price excl. VAT: 11,729.36 €

Eco fees: 0.00 €

VAT 21 %: 2,463.17 €

Product details:

Product code: AP95500

EAN: 0731304253488

Manufacturer: APC

PDF generated on: 10 December, 2018



14,192.53 €

* VAT included

A vendor-neutral, scalable monitoring system which collects, organizes, and distributes critical alerts, surveillance video and key information, providing a unified view of complex physical infrastructure environments from anywhere on the network.

Event logging

Pinpoint the timing and sequence of events leading up to an incident with the event log.

E-mail notification

Network administrators can solve problems remotely before they impact availability.

Alerts View

Easily review and correlate alerts. Provide context to alerts by attaching video clips, graphs, and maps.

Mass Configuration

Provides a comprehensive mass configuration capability, allowing users to create, save, and push configurations or specific device settings to similar APC devices with a Network Management Card.

Data logging

Identify problematic trends before they escalate or export the data log for analysis.

Browser Accessible

View the user interface with a browser. Provides quick access from anywhere on a secure network.

Data graphing

Easily analyze sensor readings to identify problematic trends before they escalate.

Notification groups

Group devices to ensure the right people receive warnings to prevent and fix potential problems in a timely manner.

Centralized management

Simplify management of the physical infrastructure using a centralized repository accessible from anywhere on the network through a powerful and easy-to-use console application.

Real-time monitoring

Immediate visibility to your entire physical infrastructure through centralized, real-time device monitoring and notification enabling quick assessment of events as they occur.

Fault notification

Real-time event notification minimizes response times to critical physical infrastructure situations. Enables IT Administrators to reduce mean time to repair, improve efficiency, and maximize uptime.

Multi-vendor device support

Extensive multi-vendor support for monitoring networked SNMP devices. Enable visibility of existing SNMP devices through threshold alert notifications, data trending and reporting.

Unified console

Customizable Windows and Linux client application enables instant access to StruxureWare Central application from anywhere on the network.

NMS Integration

Integrate SNMP traps into an Enterprise Management System, allowing users to view alerts generated by devices managed by StruxureWare Central

Free text search

Quickly locate devices and alerts through the free search field.

Alarm filters

Customize the user interface to display devices in critical, warning or normal device statuses.

Auto-discovery

Reduces the time needed to install and deploy physical infrastructure devices by automatically detecting manageable devices on your network.

Mass Configuration

Provides a comprehensive mass configuration capability, allowing users to create, save, and push configurations or specific device settings to similar APC devices with a Network Management Card.

Mass firmware update

Decrease set-up time and complexity of managed devices by simultaneously upgrading firmware for multiple APC devices.

Custom mapping

Custom backgrounds, unique user-assignable icons, and drag-and-drop device placement make it easy to identify problem devices at a glance, minimizing downtime, errors, and cost.

Private networking

Reduce IP addresses needed on the public network to manage devices, by placing them on an isolated secure network.

Advanced device grouping

Define user access and viewing capabilities to individual groups. Control access to devices by administrator-defined user accounts. Additional user access can be managed by using the built-in LDAP and Active Directory Support.

Graphical trending analysis

Access current and historic data for any device or group of devices. Plot and graph multiple data points in a logical correlation to visualize potential hazardous trends.

Custom reporting

Create, save and schedule user-defined reports for ease of data collection, distribution and analysis.

Centralized Alert Repository

Access historical alerts from several appliances through one central database. Sort alerts by type, date, appliance, and/or device group.

Integrated data storage

StruxureWare Central ships with internal storage for data and video collection. Additional storage can easily be made available using the built-in Network Attached Storage server support for long-term storage and archiving.

Localized user interface

Provides a localized user interface including alerts and alert descriptions in 10 local languages

Extendable architecture

Available node and application license keys extend the capabilities of the platform allowing it to grow to meet changing business needs.

Web services API

Provides the ability to integrate StruxureWare Central data and events into existing IT applications and tools capable of making web services calls

Surveillance add-on application

Enhance visibility of your critical assets with physical threat management to monitor and record all activity in secured areas. A centralized repository allows the user to review, search and tag surveillance events for future needs.

Add-on modbus TCP output module

Integrates data and select events from devices managed by StruxureWare Central into an existing Building Management Systems through ethernet transmission

Integrates with InfraStruXure Management applications

Achieve integrated energy efficiency, predictive planning and real-time data center operations through the add-on StruxureWare Management applications; StruxureWare Operations, Operations Capacity, Operations Change, Operations Energy Efficiency, Operations Energy Cost & Operations Mobile.

Customizable user access

Define user access and viewing capabilities to individual groups. Control access to devices by administrator-defined user accounts. Additional user access can be managed by using the built-in LDAP and Active Directory Support.

Encrypted communications

128 Bit, SSL encrypted communications between client and server, as well as encrypted user IDs and passwords stored on the server to help protect your resources

Remote monitoring support

Web-based service that serves as a second set of eyes into the health of a company's physical infrastructure.

Experienced professionals work non-stop to provide 24-hour monitoring and to help diagnose problems before they become critical.

Main specifications:

*PLEASE NOTE: Every effort has been made to ensure the accuracy of all information contained herein. Lasystems makes no warranty expressed or implied with respect to accuracy of the information, including price, editorials or specifications. Lasystems or its suppliers shall not be liable for incidental, consequential or special damages arising from, or as a result of, any electronic transmission or the accuracy of the information contained herein, even if Lasystems has been advised of the possibility of such damages. Product and manufacturer names are used only for the purpose of identification.